

Central CT Loop Trail Connection Study



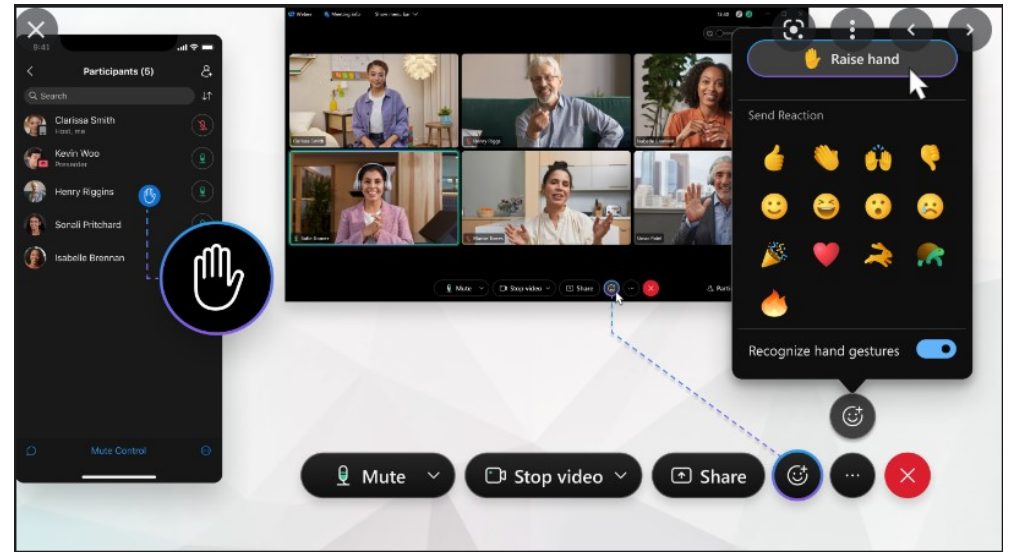
SOUTH CENTRAL REGIONAL COUNCIL OF GOVERNMENTS
Planning for Our Region's Future

September 28th, 2022, City of Meriden



Hybrid Meeting Format

- Presentations by Study Team
 - SCRCOG
 - City of Meriden
 - VHB/VN Engineers - Consultants
- Public Participation
- Online questions announced through the Moderator
- Survey
- Additional comments can be provided directly to the City of Meriden Engineering Department: PublicWorks@meridenct.gov
- Disclaimer: This meeting is being recorded and will be posted on the City of Meriden Website.



Meeting Agenda

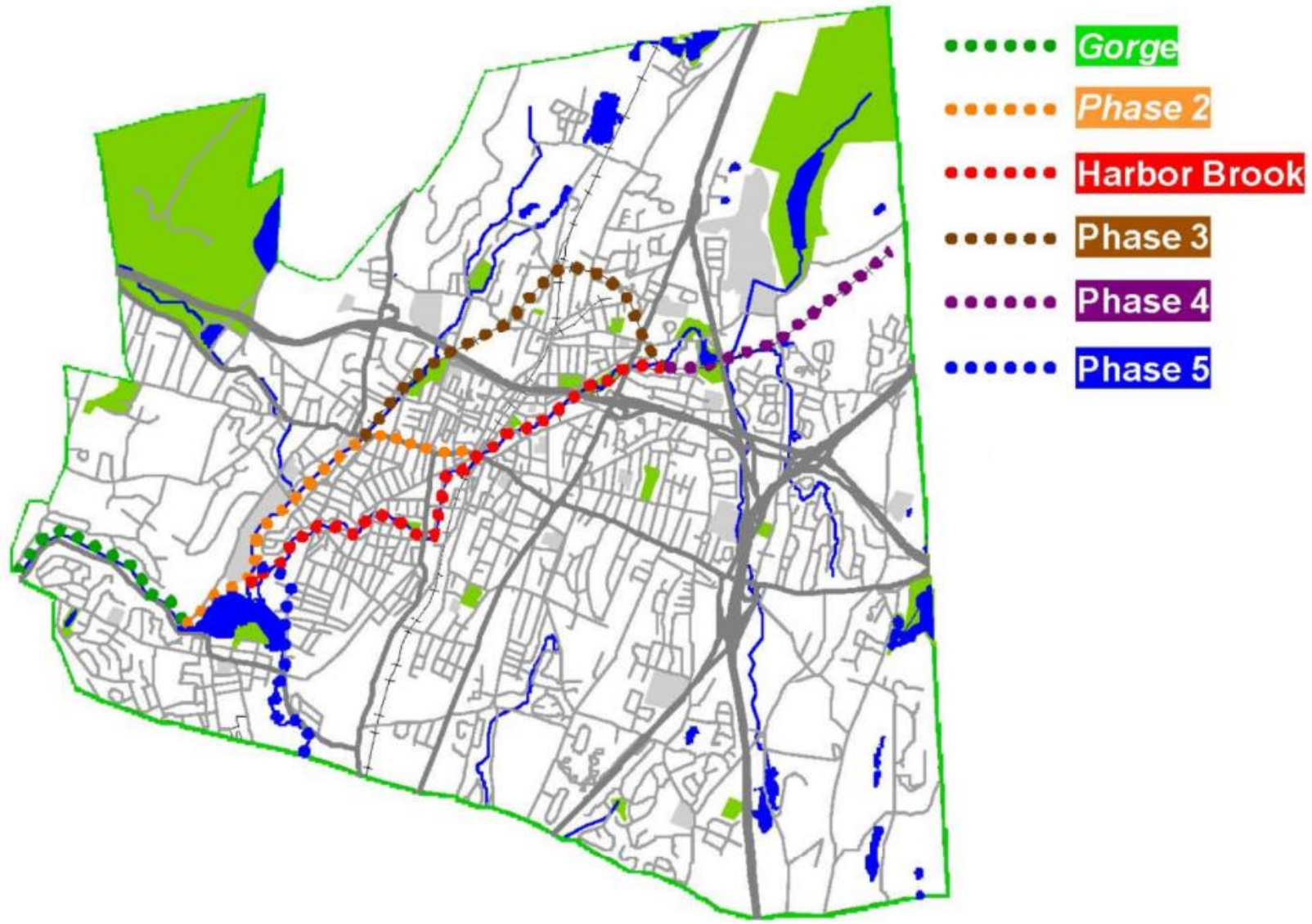
- Introductions & Project Background
- Existing Trail System
- Alignments Review
- Questions
- Next Steps
- In-person breakout session



Meeting Presenters

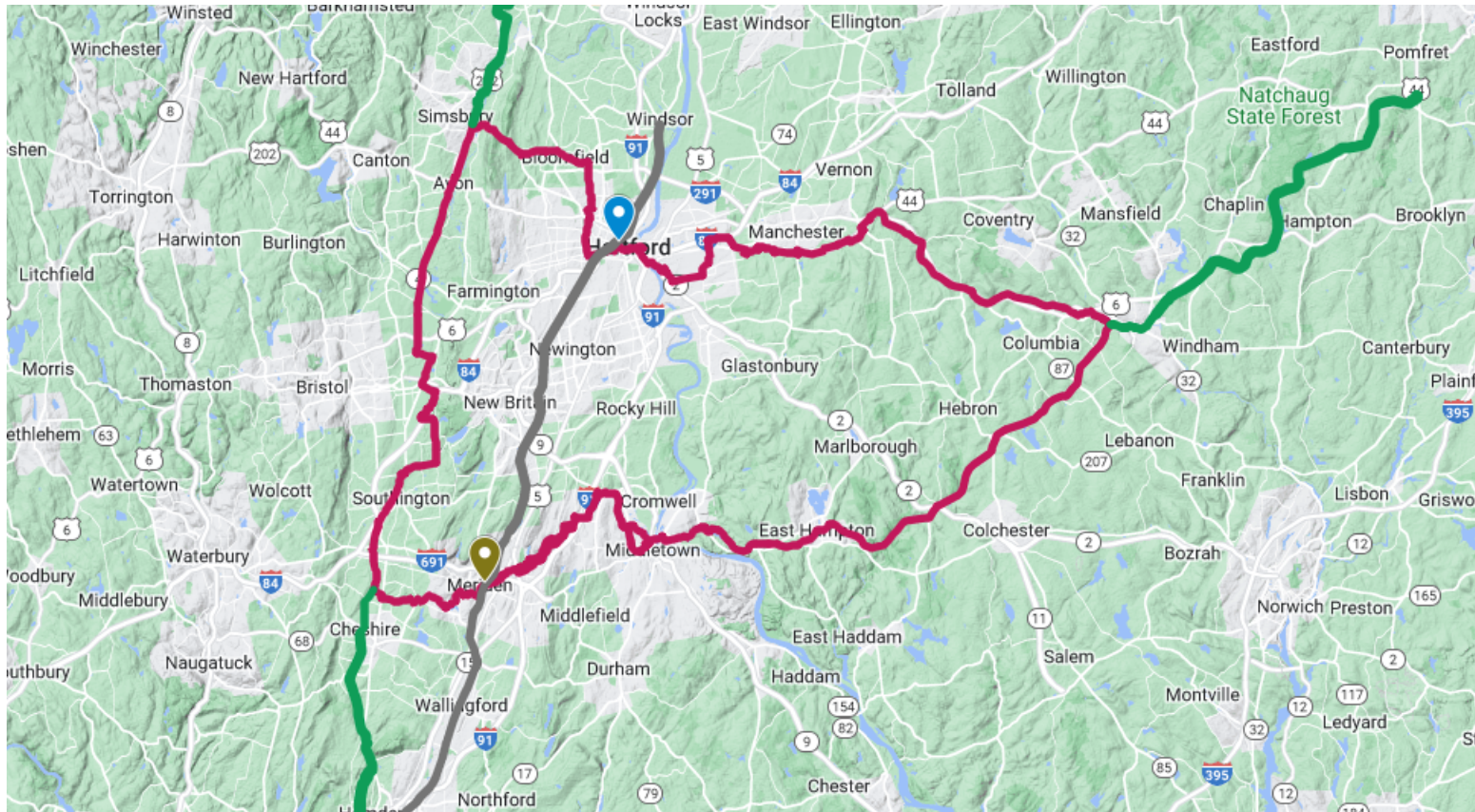
- Laura Francis, SCRCOG
- Brian Ennis & Emile Pierides, Engineering, City of Meriden
- Joe Feest, Economic Development, City of Meriden
- Paul Dickson, Planning, City of Meriden
- Bridget Moriarty, VN Engineers
- Josh Eannotti, VHB
- Chris Faulkner, VHB

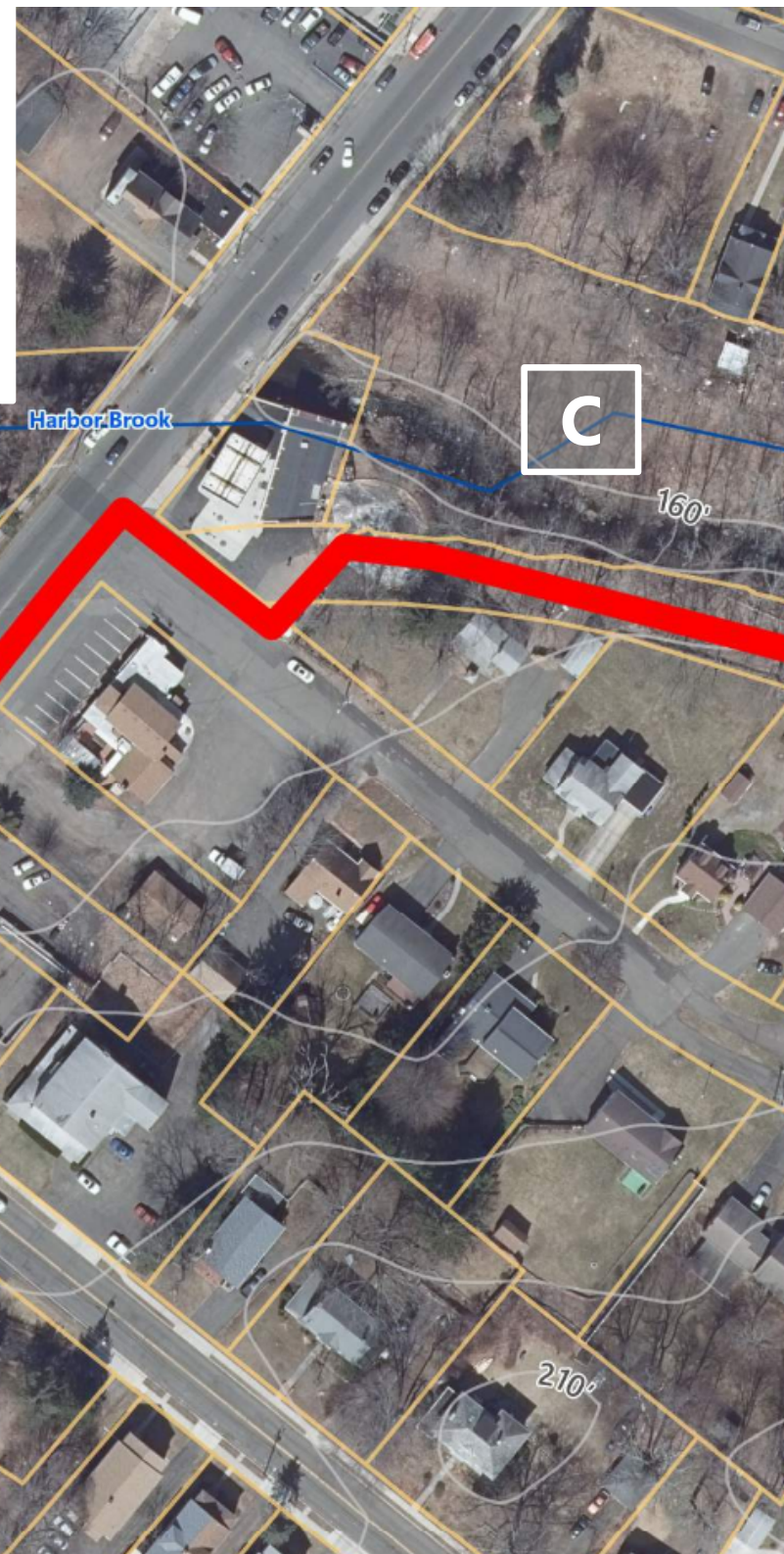
Meriden Proposed Trail Network

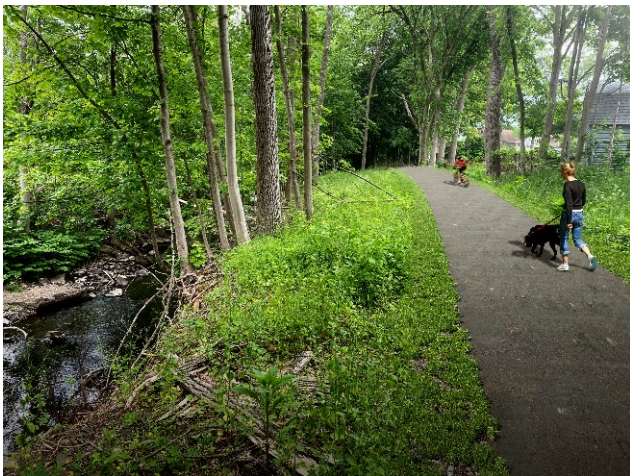
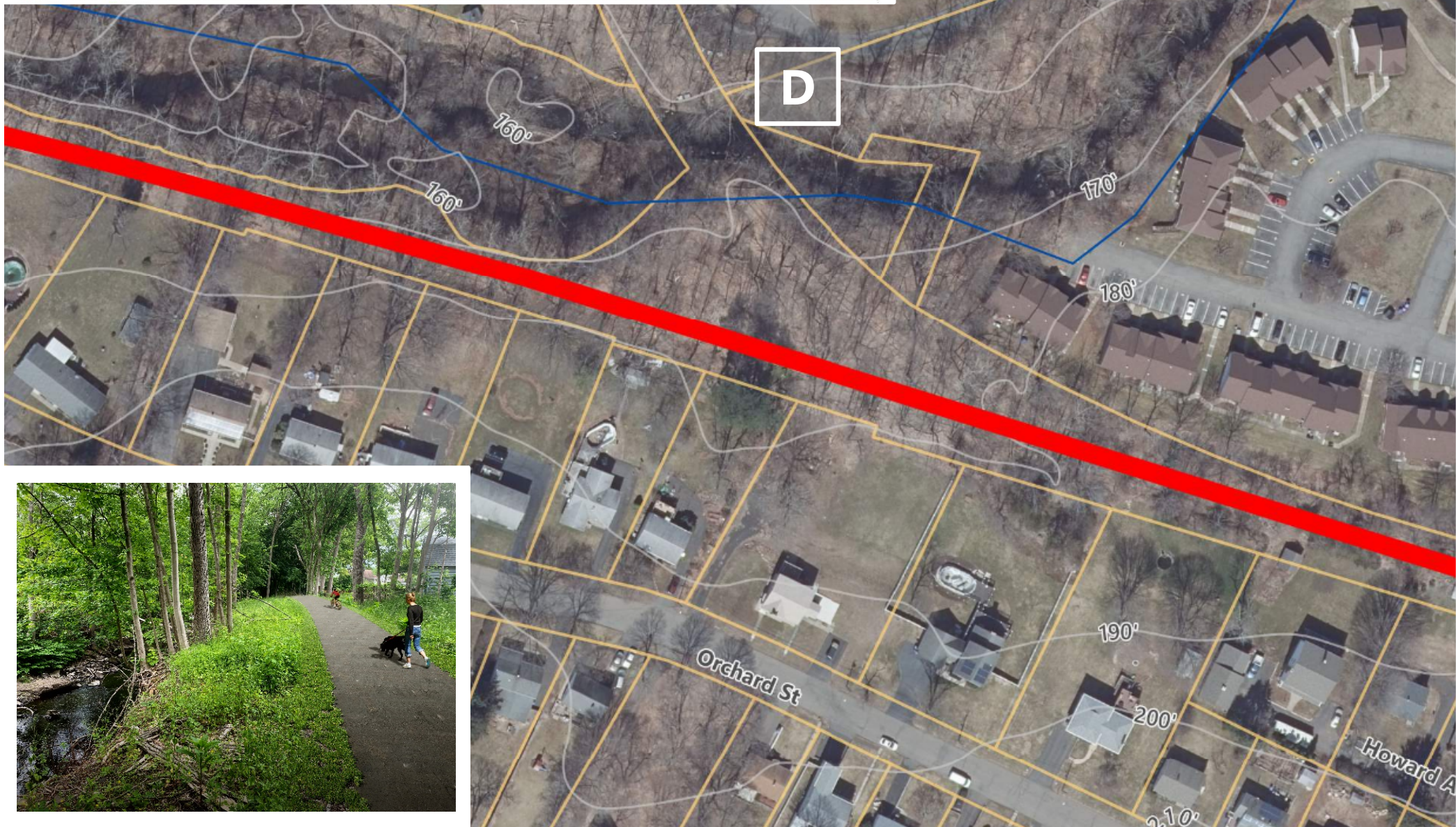
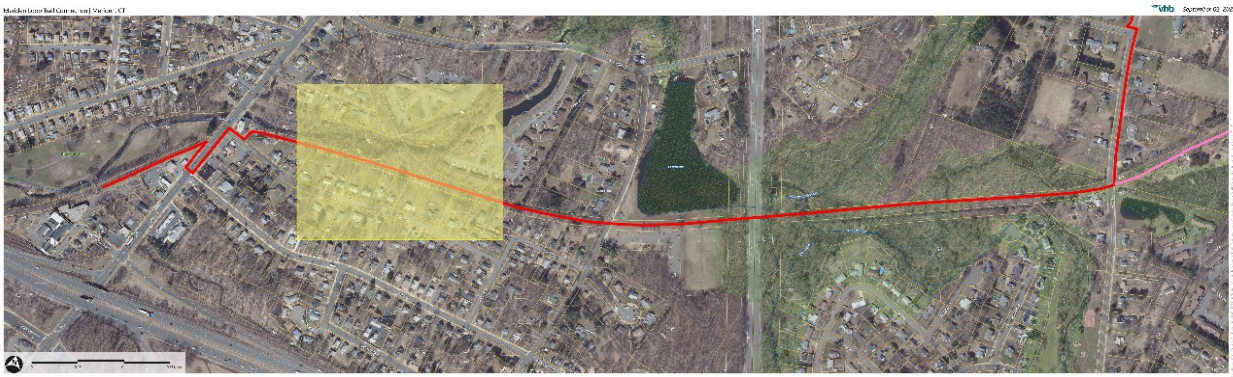


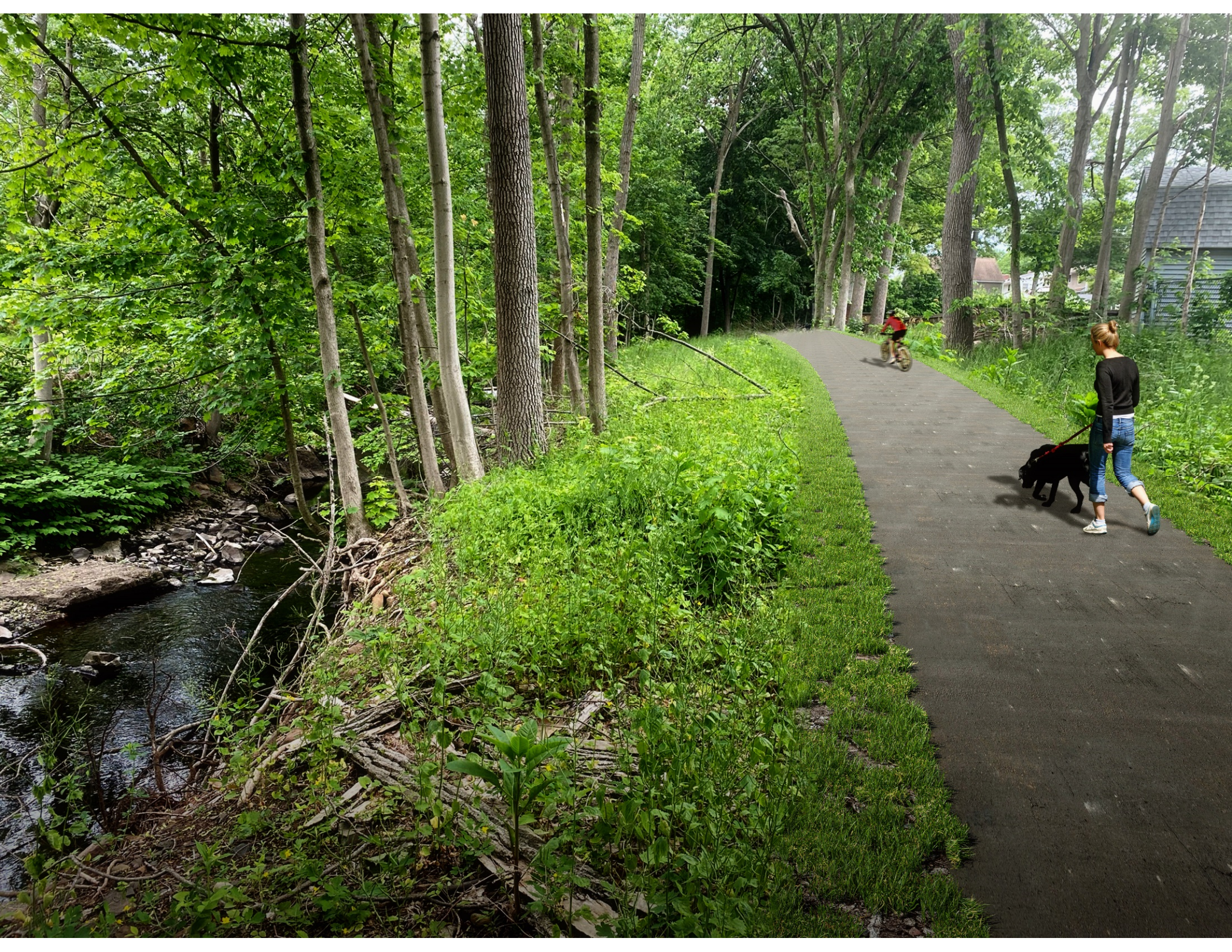
Study Purpose

- Identify the most practical and feasible alignment for the final section of the Central Connecticut Loop Trail in Meriden that will connect the existing trail networks in Meriden and Middletown.

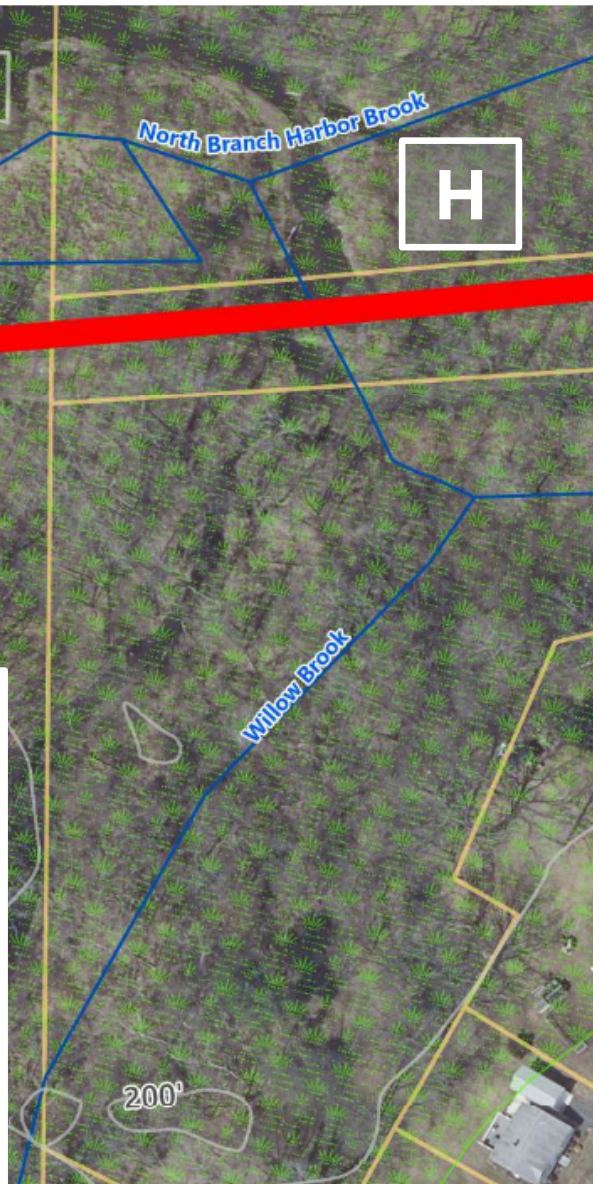




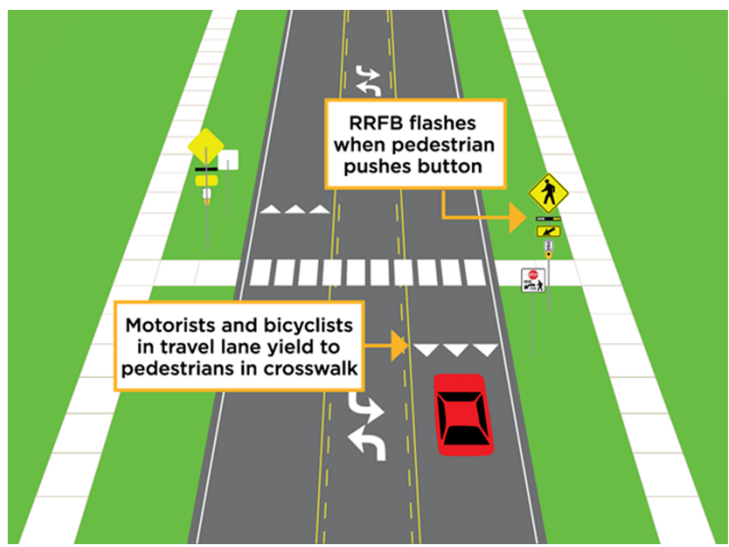


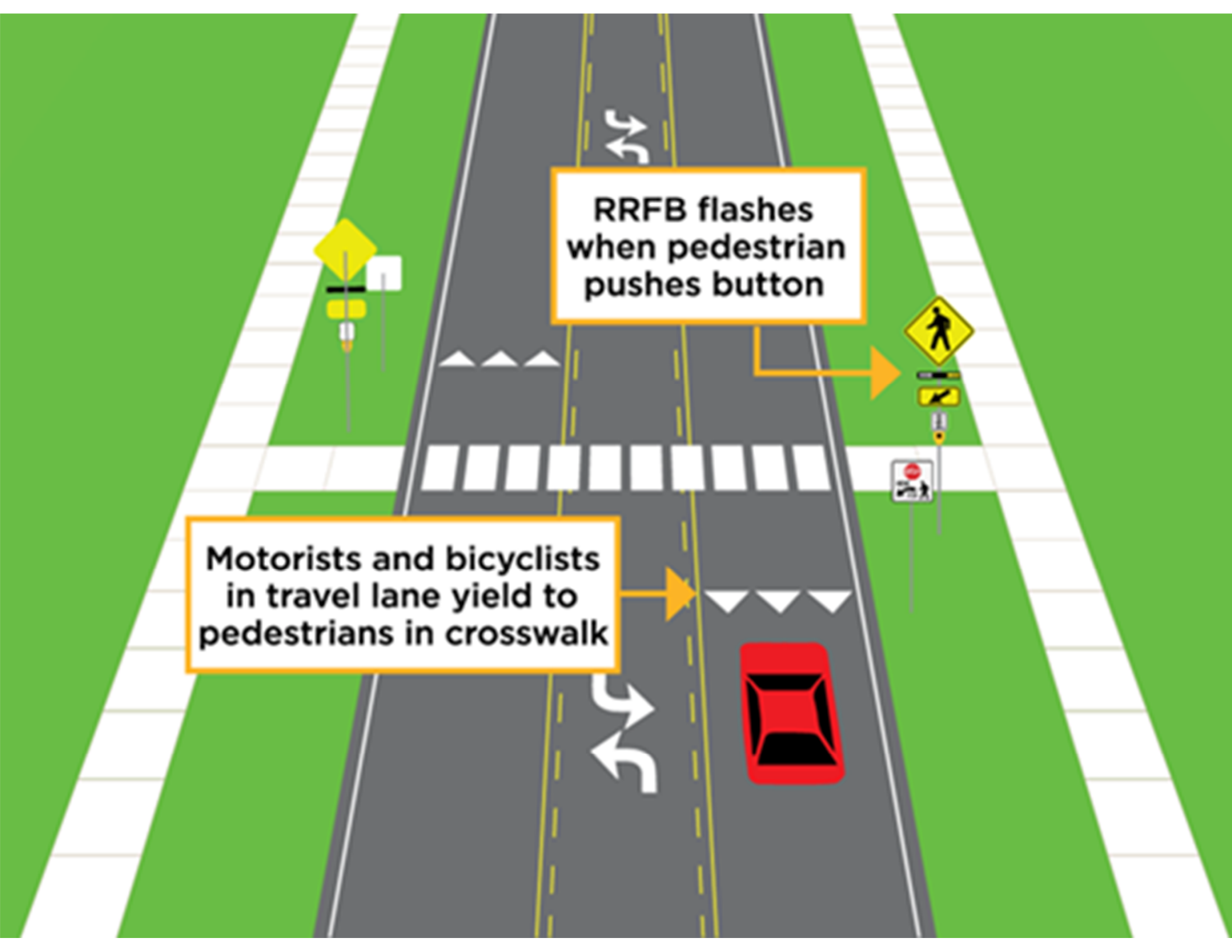












RRFB flashes
when pedestrian
pushes button

The diagram shows a two-lane road with a central dashed yellow line and solid white edge lines. A crosswalk with white rectangular markings is in the center. On the left side of the road, there is a yellow diamond-shaped sign with a black cross symbol. On the right side, there is a yellow diamond-shaped sign with a black pedestrian symbol, a rectangular button symbol, and a white rectangular sign with a red circle and a black pedestrian symbol. A red car is in the right lane, approaching the crosswalk. White arrows indicate traffic flow: straight ahead in the center and turning left in the outer lanes. An orange arrow points from the text box to the button symbol on the right.

Motorists and bicyclists
in travel lane yield to
pedestrians in crosswalk

An orange arrow points from this text box to the crosswalk area.

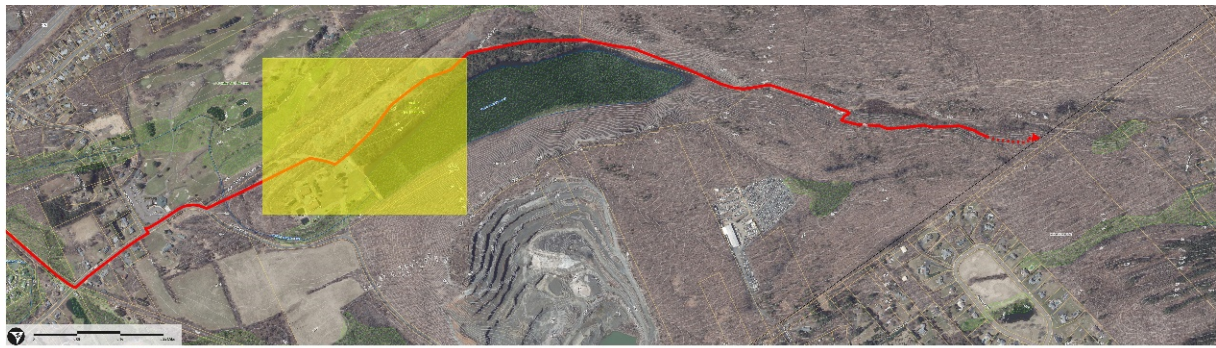
Alternatives 1 & 2



Alternative 3







Q

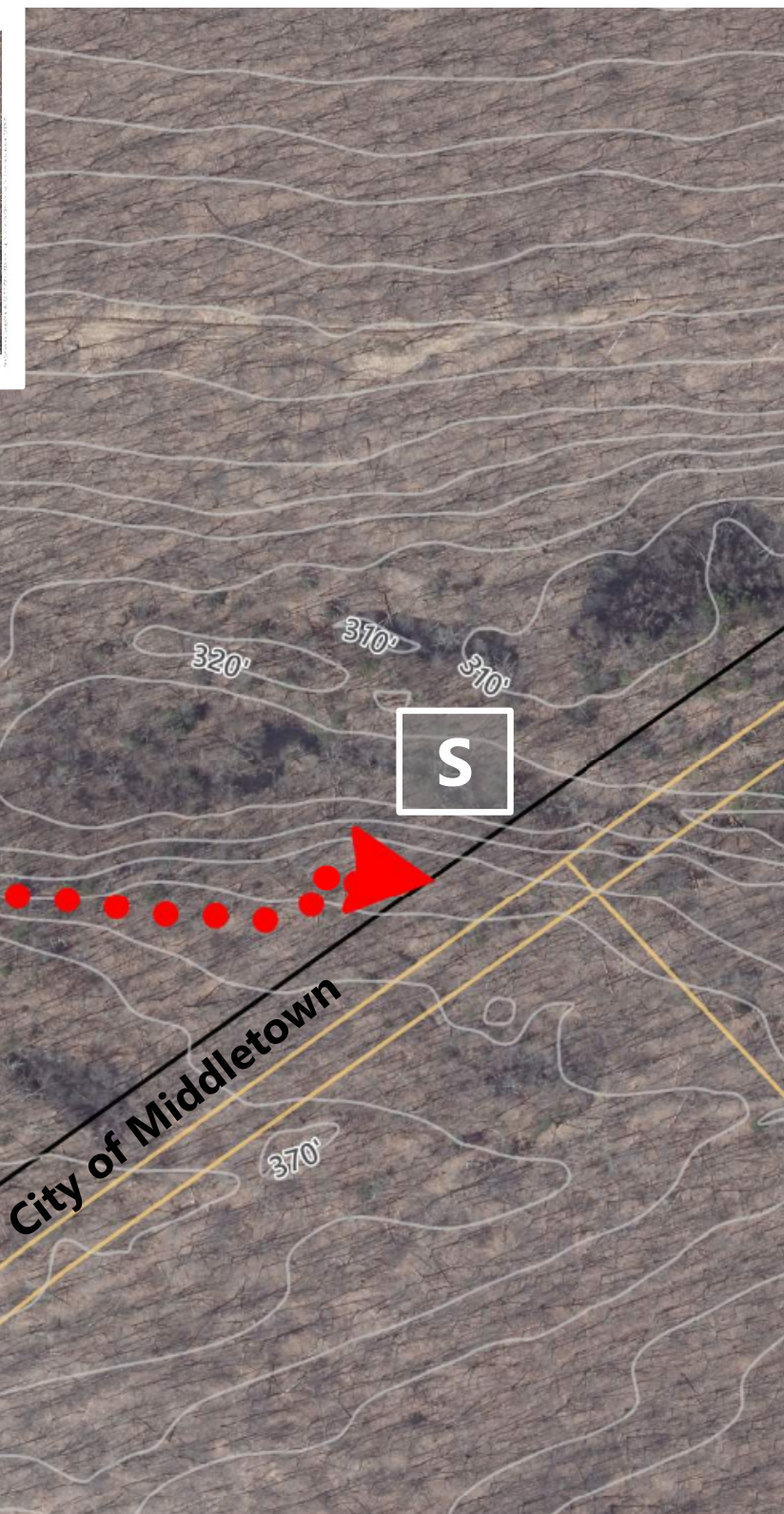
P











Preferred Alignment – Benefits

- Maximize off-road potential
- Relationship with Harbor Brook and Bradley Hubbard Reservoir
- Reduced impact to wetlands and natural resources
- Reduced right-of-way/property impacts
- Feasible/constructible connection with Middletown



Comments

During This Meeting, Or To:

Laura Francis
Deputy Director/Director of Transportation Planning
South Central Regional Council of Governments
127 Washington Avenue, 4th Floor West
North Haven, CT 06473
(203) 234-7555

lfrancis@scrcog.org

or

Engineering Department, City of Meriden

PublicWorks@meridenct.gov



Thank you for your
valuable feedback.

Next Steps

- Review feedback
- Finalize Report
- Issue Report for Future Funding