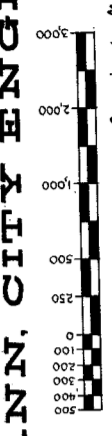




**MAP OF MERIDEN
1958**
C. PRANN, CITY ENGINEER



- SINGLE FAMILY R-1
- SINGLE FAMILY R-2
- MULTI-FAMILY R-3
- PARK AND COMMUNITY BUILDINGS
- COMMERCIAL 1
- COMMERCIAL 2
- INDUSTRIAL

Checked by the Planning Commission
 City of Meriden - December 1, 1958
 John S. Moore, Chairman
 L. Stewart, Secretary
 Robert W. Pratt, City Engineer
 Charles J. ...